



FORCES

Knowledge Transfer

Larry Rohrbough
University of California, Berkeley



Knowledge Transfer Summary

- * New Programs & Activities
 - * Siebel Energy Institute
 - * Workshop on Cyber-Physical Systems
 - * Transportation and Energy Conservation
 - * Vehicle Transportation Network Testbed

- * Ongoing Programs & Activities
 - * Resilient Societal-Scale CPS
 - * Philippine-California Advanced Research Institutes (PCARI)
 - * Resilient Water Networks
 - * Singapore-MIT Alliance for Research and Technology (SMART)

Siebel Energy Institute



The Siebel Energy Institute is a consortium of international universities focused on advancing data analytics research for energy systems in an open, collaborative, and publicly-available manner.

The Institute funds cooperative and innovative research grants in data analytics, including statistical analysis and machine learning for the electrical smart grid, the oil and gas industry, and other modern energy systems.

www.siebelenergyinstitute.org

Siebel Energy Institute

Consortium for Innovative and Research



INSTITUTE DIRECTOR: S. Shankar Sastry, Dean of Engineering, UC Berkeley

INSTITUTE CHAIRMAN: Thomas M. Siebel, The Thomas and Stacey Siebel Foundation

Siebel Energy Institute

Fostering High-Impact Collaboration



Seed Funding for Development of Large Proposals - funding of ~15-18 new projects a year at \$50,000 each



Matching Grants for Successfully Funded Projects – Matching grants up to 20% for eligible projects, capped at \$75,000 a year



Industrial Advisory Board – An exclusive industry partner program that fosters active collaboration between the private sector and the Institute members and researchers



Research Conferences – Annual conference to disseminate the results of the projects associated with the Institute



Selected Topical Research Workshops – Special in-depth workshops on new and emerging areas for energy analytics



Siebel Scholars – Coordination with the Siebel Scholars Foundation to select eight students to receive \$35,000 as a merit-based award

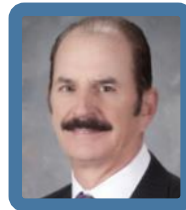
RESEARCH WILL BE PUBLICLY AVAILABLE

Siebel Energy Institute

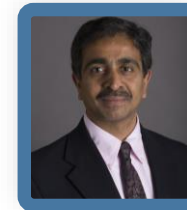
Industry Partnerships



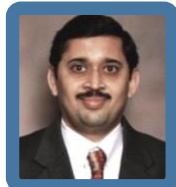
Ed Abbo
President & CTO



Mark Savoff
Executive Vice President & COO



Tilak Subrahmanian
Vice President, Energy Efficiency



Datta Godbole
CTO, Honeywell Building
Solutions



Deborah Affonsa
Vice President, Customer
Service



Thomas Birr
Senior Vice President, Strategy &
Innovation



Siebel Energy Institute

Launch Event – August 4, 2015 – San Francisco, CA



Workshop on Cyber-Physical Systems

Joint FORCES-ACCESS Workshop – Oct 26-27, 2015, KTH

- * Goal to investigate and identify future opportunities and challenges
- * Single track presentations, poster sessions, and group breakout sessions
- * Topics included:
 - * Communications
 - * Energy and transportation systems
 - * Security
 - * Education
- * Participants from academia and industry (EU, US, UK, Asia)
 - * ABB, Ericsson, Modelon, and SAAB
- * Workshop program and presentations online:
 - * <https://www.access.kth.se/en/newsandevents/workshops/access-forces-workshop-on-cyber-physical-systems-1.590182>



Transportation and Energy Conservation

Leveraging Data Analytics and Incentives

- * Urban Parking Management
 - * Seattle Department of Transportation (Paulo Nunes-Ueno, Transit Division Director)
 - * Parking in downtown region of city
 - * Congestion incentives to shift modes of transportation
 - * Living laboratory
- * Mobility Electronic Market for Optimized Travel (MeMOT)
 - * ARPA-E project to design, build, and trial a system to incentivize people to adapt travel choices to conserve energy
 - * Rewards people to shift routes, departure times, modes of travel, and vehicles based on information they receive from MeMOT
 - * Points awarded based on energy savings, can be redeemed for travel-related and other benefits at participating vendors

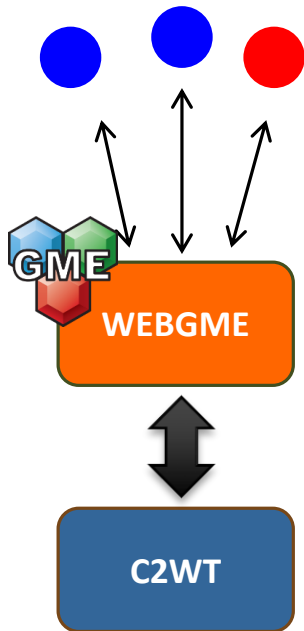


Vehicle Transportation Network Testbed

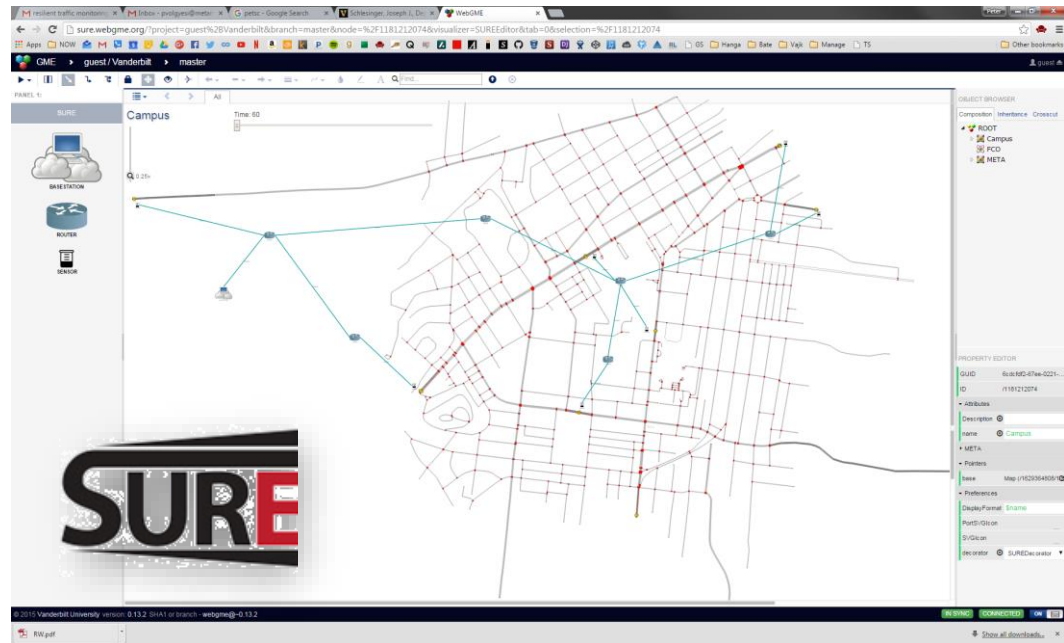
System science of sec**U**rity and **RE**silient for cyber-physical systems
(SURE)

SCOPE: Evaluation testbed for vehicle transportation networks. Developed by SURE, used by FORCES.

OBJECTIVE: Use heterogeneous simulations of attacker-defender games to evaluate resilient monitoring and control in CPS



Simulation Integration
Platform



<http://sure.webgme.org/>

Resilient Water Networks

Singapore-MIT Alliance for Research and Technology (SMART)

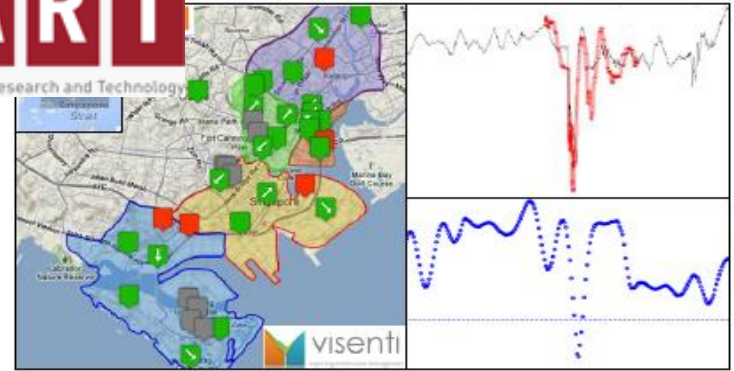
* Resilient Water CPS in Singapore

- * MIT, SMART-CENSAM,
- * Visenti Pte., PUB, NRF



SMART

Singapore-MIT Alliance for Research and Technology



* SWaT: Secure Water Treatment

- * Funded by: Ministry of Defense
- * Design review: PUB and SUTD
- * Extensions: water storage and distribution

* FORCES research contributions

- * Network control
- * Vulnerability assessment
- * Resilient monitoring and diagnostics

SWaT: Secure Water Treatment Test Bed

