

# TWC: Small: Secure Mobile Devices through Multiple Lines of Defense



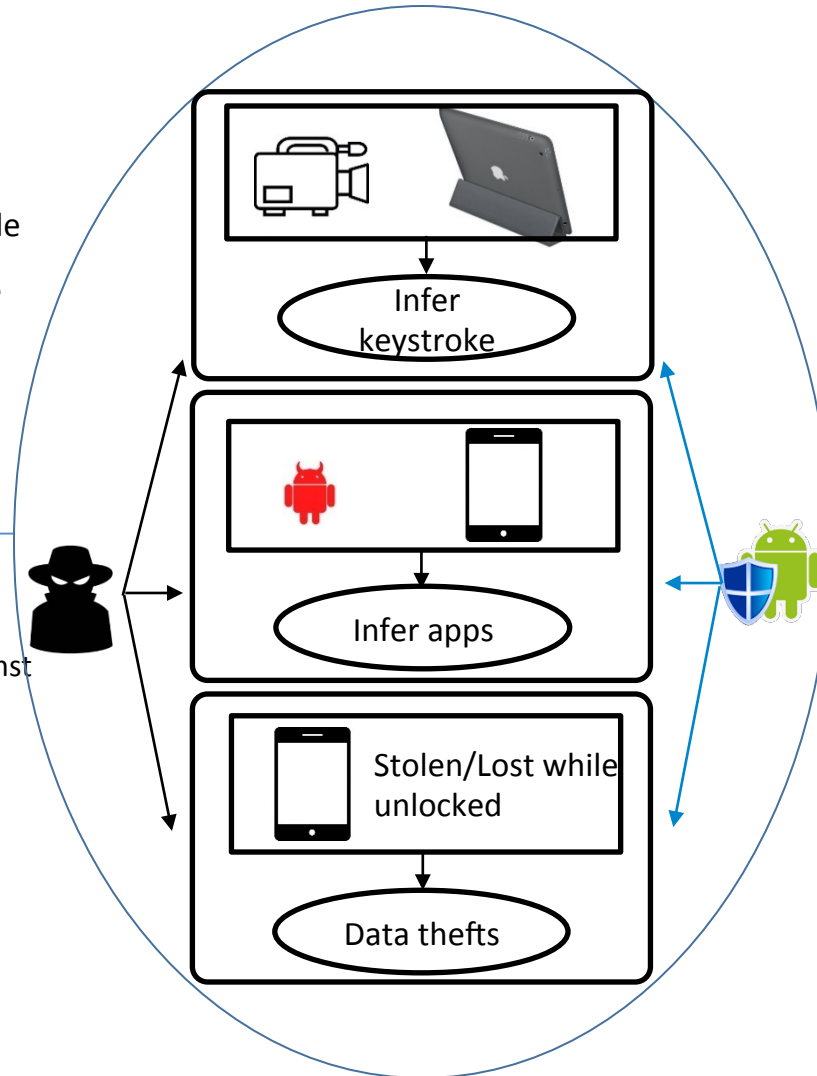
## Challenge:

- Develop secure and usable countermeasures against new attacks when mobile devices are watched, or intruded, or lost/stolen.

## Solution:

A suite of countermeasures against novel attacks

- Video-based keystroke inference attacks.
- Power-analysis-based app inference attacks.
- Data thefts.



## Scientific Impact:

- Expand the fundamental understandings about mobile device security.
- Improve the information security of mobile users in U.S. and around the world.

## Broader Impact:

- Develop cross-disciplinary mobile security curriculum.
- Provide research opportunities for undergraduate and underrepresented students.
- Involve in the ASU engineering outreach/ summer programs and the annual IAB meetings of ASU SenSIP center.