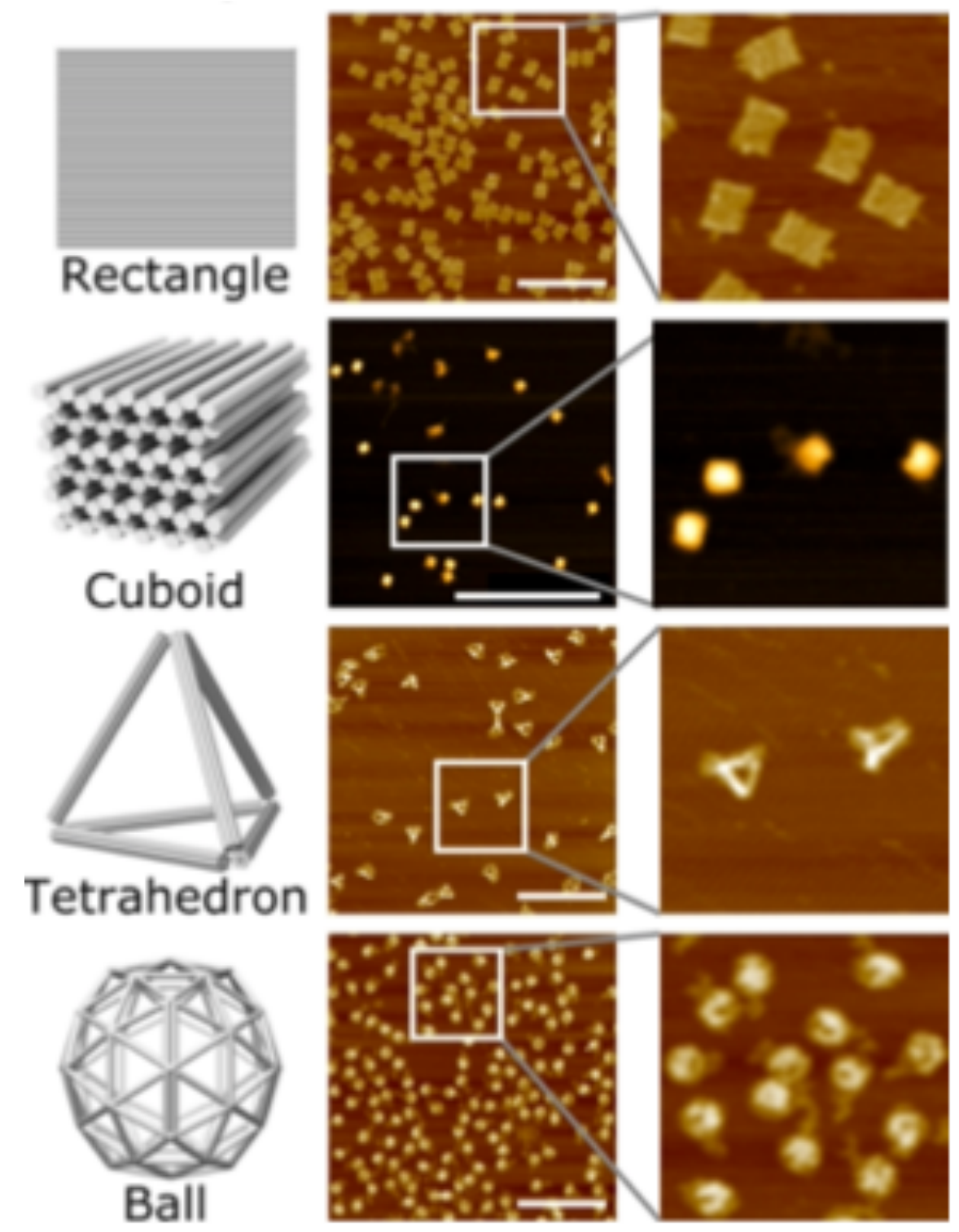


NRI: INT: Self-Assembly of Modular Robots Constructed using DNA: Modeling and Manufacturing Nanostructures with Graph Neural Networks and DNA Origami/2132886/ August, 24 2021/PI Matthew Travers, Carnegie Mellon/Co-PI Rebecca Taylor, Carnegie Mellon

DNA Origami (Taylor Lab)



Self-Assembly



Skylar Tibbits, Baily Zuniga, Carrie McKnelly, and Athina Papadopoulou. Fluid-Assembly Chair — Self-Assembly Lab.

NRI: INT: Self-Assembly of Modular Robots Constructed using DNA: Modeling and Manufacturing Nanostructures with Graph Neural Networks and DNA Origami/2132886/
 August, 24 2021/PI Matthew Travers, Carnegie Mellon/Co-PI Rebecca Taylor, Carnegie Mellon

