



CPS:TTP Option: Synergy: Collaborative: Internet of self-powered sensors - Towards a scalable long-term condition-based monitoring and maintenance of civil infrastructure

Shantanu Chakrabartty (Lead PI - Washington University in St. Louis)

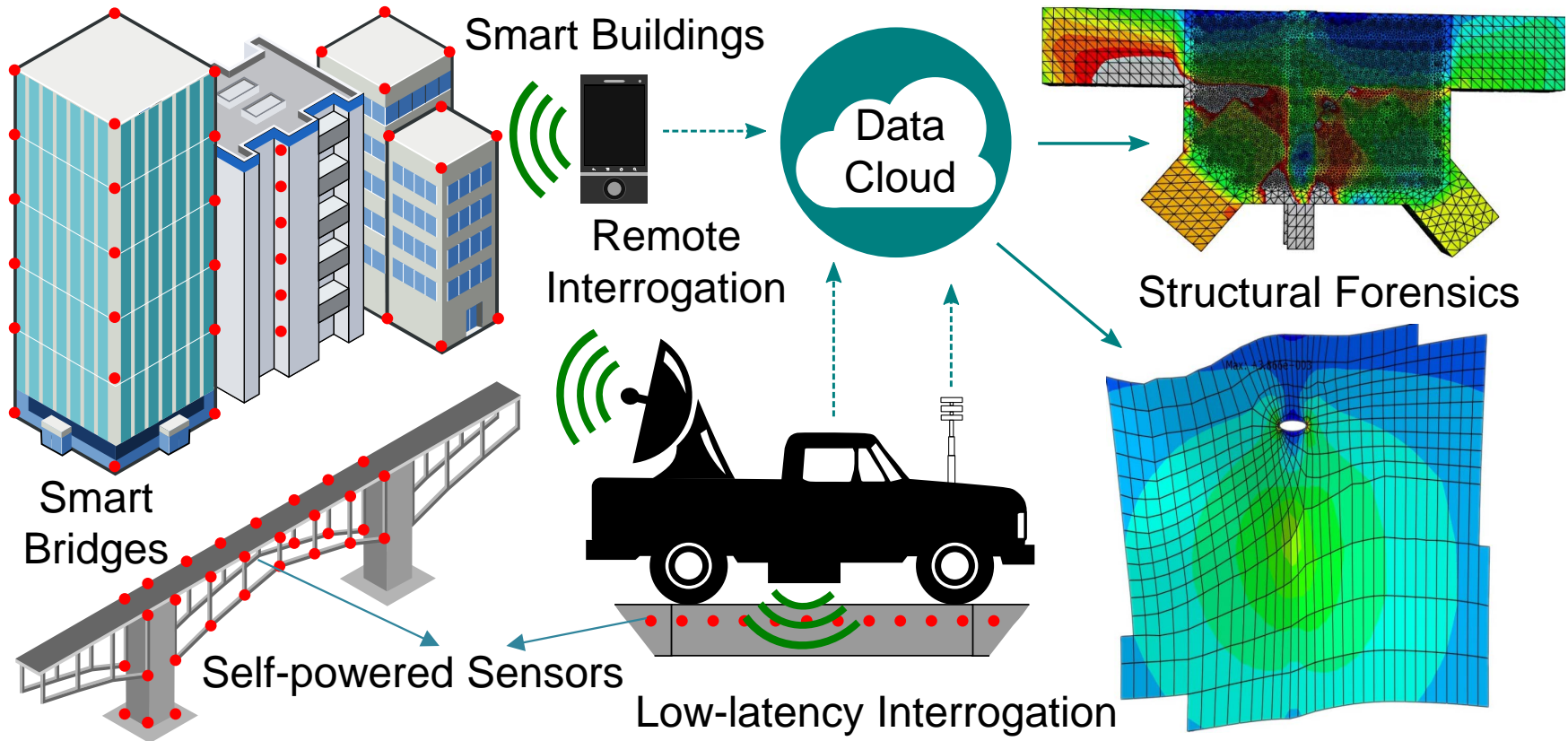
Xuan Zhang (Washington Univ. St. Louis)

Nizar Lajnef (PI – Michigan State University)

Imen Zabaar (Michigan State University)

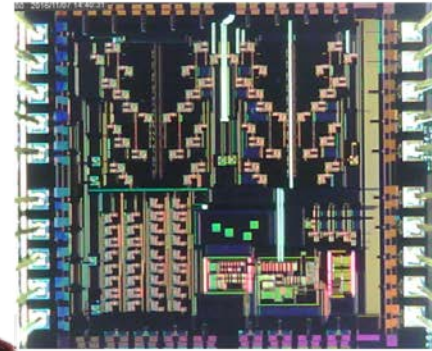
Gokhan Pekcan (PI - University of Nevada, Reno)





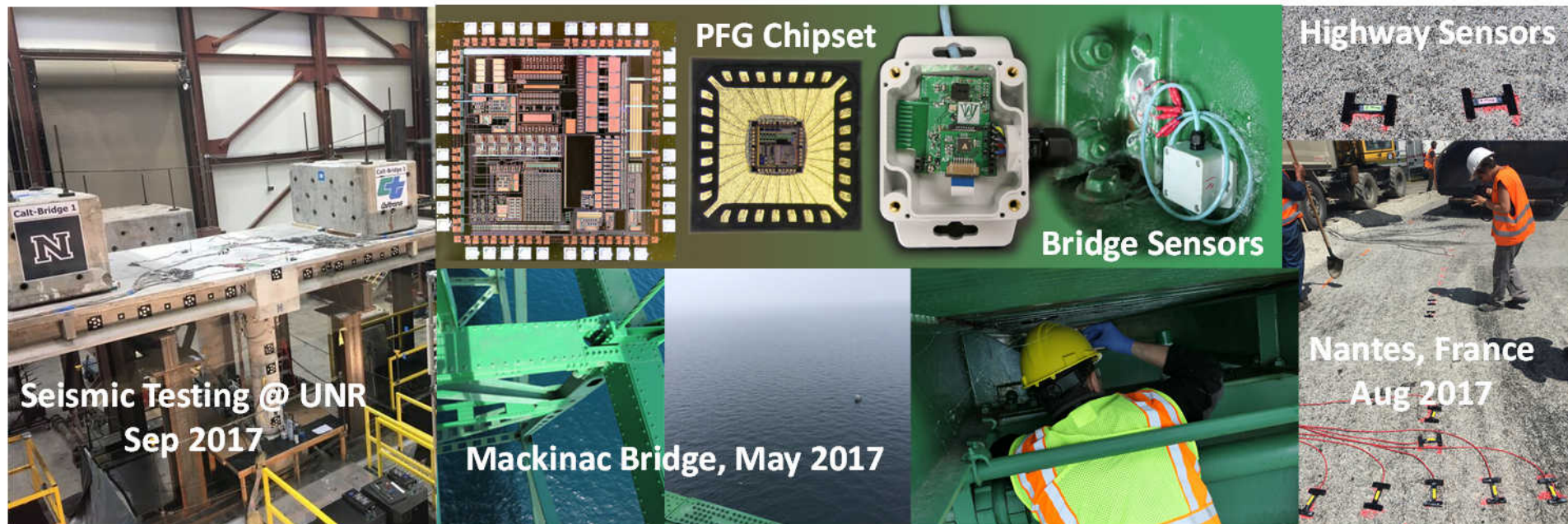
- **Post-disaster analytics and condition-based maintenance requires long-term monitoring of rare events.**

Findings and Results



Variance based digital processor
- Use the variance or noise to represent logic levels.

Drive-thru Wireless Interrogation – Interrogate sensors at highway speeds



Seismic Testing @ UNR
Sep 2017

Mackinac Bridge, May 2017

Nantes, France
Aug 2017