

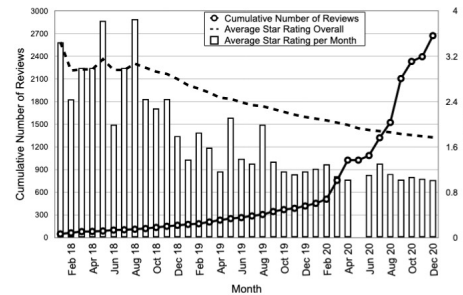


Collaborative Research: SaTC: EDU: Security and Privacy Implications of Remote Proctoring for School Policies and Practices

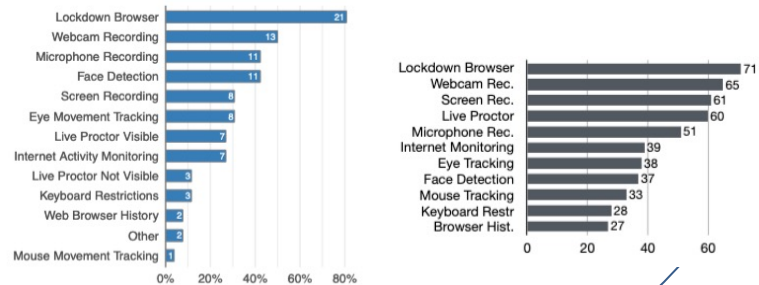
Challenge:

- COVID-19 increased the amount and importance of remote learning and work. Remote proctoring software has been normalized in exam taking, but the security and privacy implications are not well explored
- This project explores:
 - the impacts on students' privacy, security, and academic integrity;
 - ~how educators administer exams and their privacy and security considerations;
 - the decision-making processes of educational institutions as they adopted remote proctoring tools prior to, during, and after the pandemic.

Experimental Results from Surveys



During remote learning, there was a surge in using remote proctoring tools as evidence in Google Chrome browser extension ratings



Both educators (left) and students (right) describe a lot of exposure or choices of different monitoring

Scientific Impact:

- This work will improve our understanding of security and privacy in the remote setting, for both education and work from home.
- Improved guidance and training on the best practices.

Solution:

- Controlled Experiments and surveys with students and educators in how e-proctoring software affects their security and privacy concerns and what settings are used.
- Case studies of universities and institutions evaluating and selecting e-proctoring tools and how they communicate about them to students and instructions

Broader Impact and Broader Participation:

- Improve school policies and practices around remote proctoring
- Support multiple PhD students and undergraduates through REU supplements
- Engage intuitions, like colleges and universities, with the privacy and security impacts of remote learning