



Integration of Social Behavioral Modeling for Smart Environments To Improve Energy Efficiency of Smart Cities

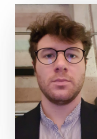
Zachary Bahr
Undergraduate Student
CS, MS&T



Eura Shin
Undergraduate Student
CS, University of Kentucky



Enrico Casella
Ph.D. Student
CS, University of Kentucky



Delicia Vaz
Graduate student
Psychology Department, MS&T



Vincenzo Agate
Visiting Graduate Student
University of Palermo, Italy



Hashem Sadeghiyeh
PostDoc
Psychology Department, MS&T



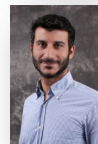
Atieh R. Khamesi, PostDoc
CS, University of Kentucky



Ashutosh Timilsina, Ph.D. Student
CS, University of Kentucky



Simone Silvestri
Assistant Professor
Computer Science Department
silvestri@cs.uky.edu
www.cs.uky.edu/~silvestri/



Denise A. Baker
Assistant Professor
Psychology Department
bakerden@mst.edu



Award ID#:
NIFA 2017-67008-26145

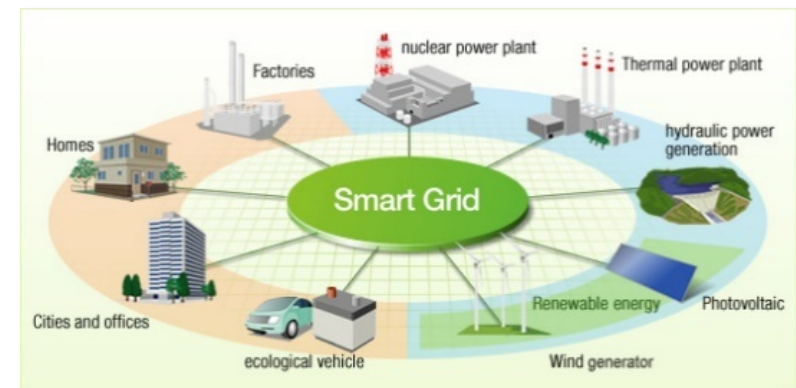
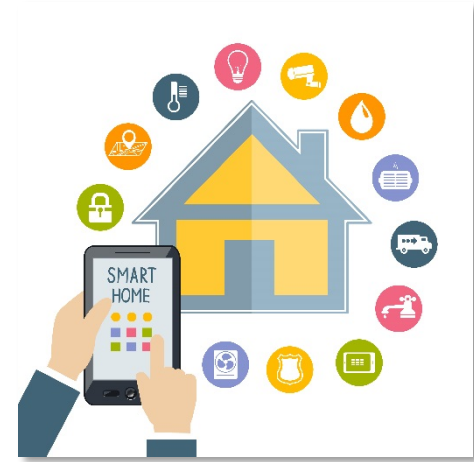
Description

Main Goals and Primary Tasks:

- Understand/model/predict social and **behavioral aspects** involved in human **interaction with smart residential environments**
- Design comprehensive framework for **energy management** considering **psychological dimensions** of user behavior

Methodology:

- Define social **behavioral models**
- Exploit **machine learning** to learn/refine models
- Perceived value-aware **energy management**
- **Psychological factors** of efficacy and user engagement.

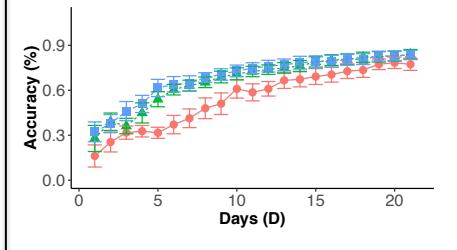
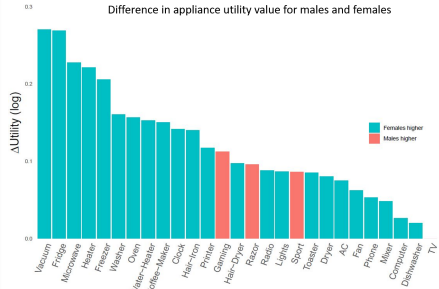


Findings

Demographic-Individual Differences

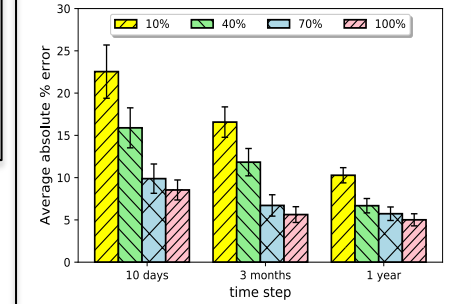
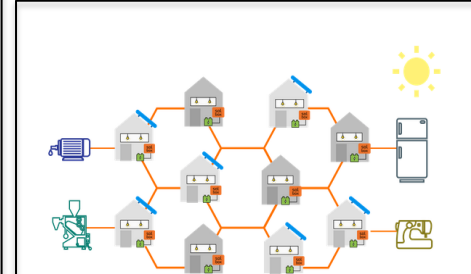
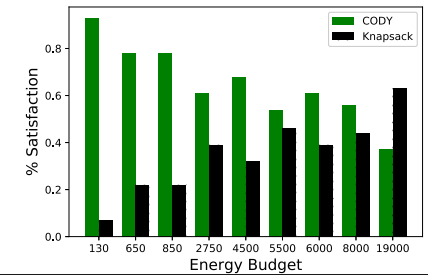
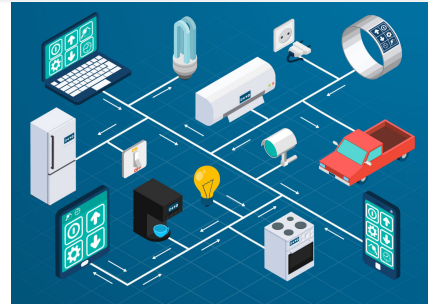


Difference in appliance utility value for males and females



Active Learning Approach for Appliance Recognition

User Perceived-Value Energy Management



User-aware Energy Sharing System