



# Active Heterogeneous Sensing for Fall Detection and Fall Risk Assessment

M. Skubic, J. Keller, D. Ho, Z. He, M. Popescu & M. Rantz  
*ECE, HMI and Nursing, University of Missouri*

CPS project that investigates the interplay of anomaly detection and the risk of anomaly events

Multi-camera vision  
(3D voxel model)

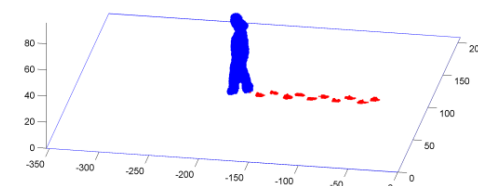
8-microphone  
circular array

PIR array

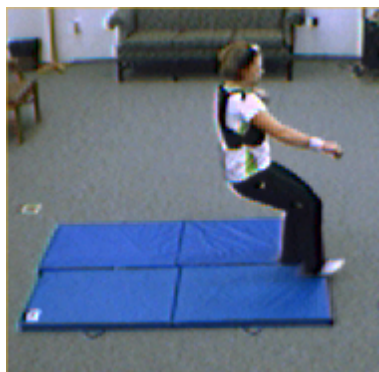
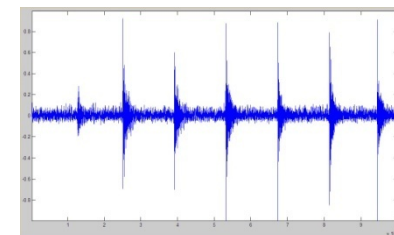
*Detection history affects risk assessment*



*Risk factors affect detection*

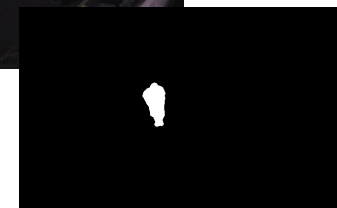


footsteps



## CHALLENGES

- Unstructured, dynamic environments
- Low light, variable lighting
- Adaptive fusion of multi-scale signals with qualitative data and risk factors
- Privacy restrictions



CPS Grant CNS-0931607