

Infusing System Design and Sensor Technology in Education (INSIGHT)

– A GK-12 Graduate STEM Fellowship Program at Kansas State University

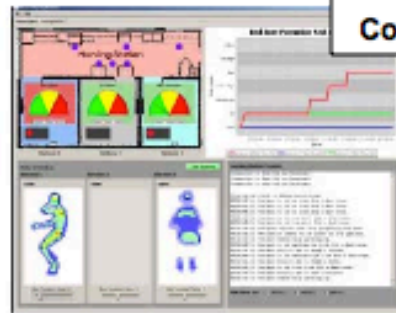
NSF-DGE 0948019, M. Neilsen, G. Singh, J. Spears, V. Wallentine, N. Zhang, gk12.cis.ksu.edu

INSIGHT GK-12 themes are important to rural Kansas

- Precision Agriculture

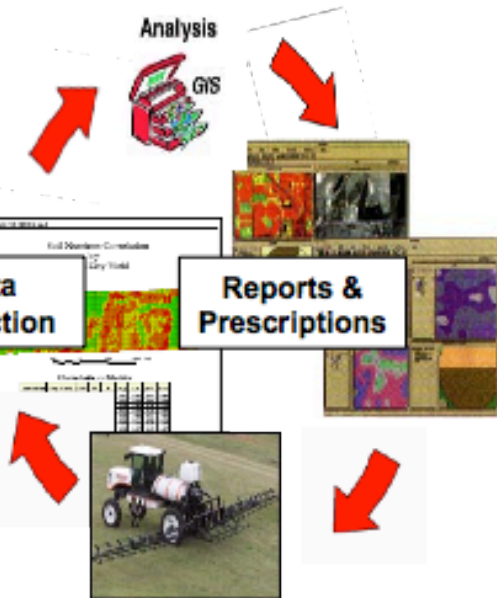


- Cyber-Health



Data
Collection

Reports &
Prescriptions



Focus Areas:

- Rural Kansas Schools – Physical and Vocational Education
- STEM focus – Technology and Engineering
- Leverage Strengths – real-time embedded systems, software engineering, model checking, security, precision agriculture, wireless sensor networks

